

ZENNOR COTTAGE FIRE ASSESSMENT

Identification of Fire Hazards:

	Identification of Fire Hazards		
	Ignition	Fuel	Oxygen
Kitchen	Hob Oven Microwave	Cooking Oil Cleaning fluids Bin (paper waste)	Natural airflow Open Window Open Door Extractor Fan
Living Room Area	Electric Stove Storage Heaters Table Lamp TV DVD Player	Sofas Rugs Nest of Tables Window Blinds Paper guides	Natural airflow Open Window
Dining Area		Table Chairs	Natural airflow Open door
Bunk Bedroom	Table Lamp Bedside Lamps Storage Heater	Beds Chest of Drawers Rug Bed Linen Pillows Towels Curtains	Natural airflow Open Window
Under Stair Cupboard	Residual Current Detector Panel Water Heater	Clothes	Natural airflow
Bathroom	Fan Heater Shaver Light Towel Heater	Bath Panel Window Blind	Natural airflow Open Window Extractor Fan
Double Bedroom	Radio Storage Heater Bedside Lamps TV Hair Dryer	Rug Chests of Drawers Curtains Wardrobe Bookcase and Books	Natural airflow Open Window
Outside	Outside Lights	Wooden Balcony Wheelie Bin (paper waste)	Natural airflow
Garage	Car	Roof timbers	Natural airflow Open door

People at Risk:

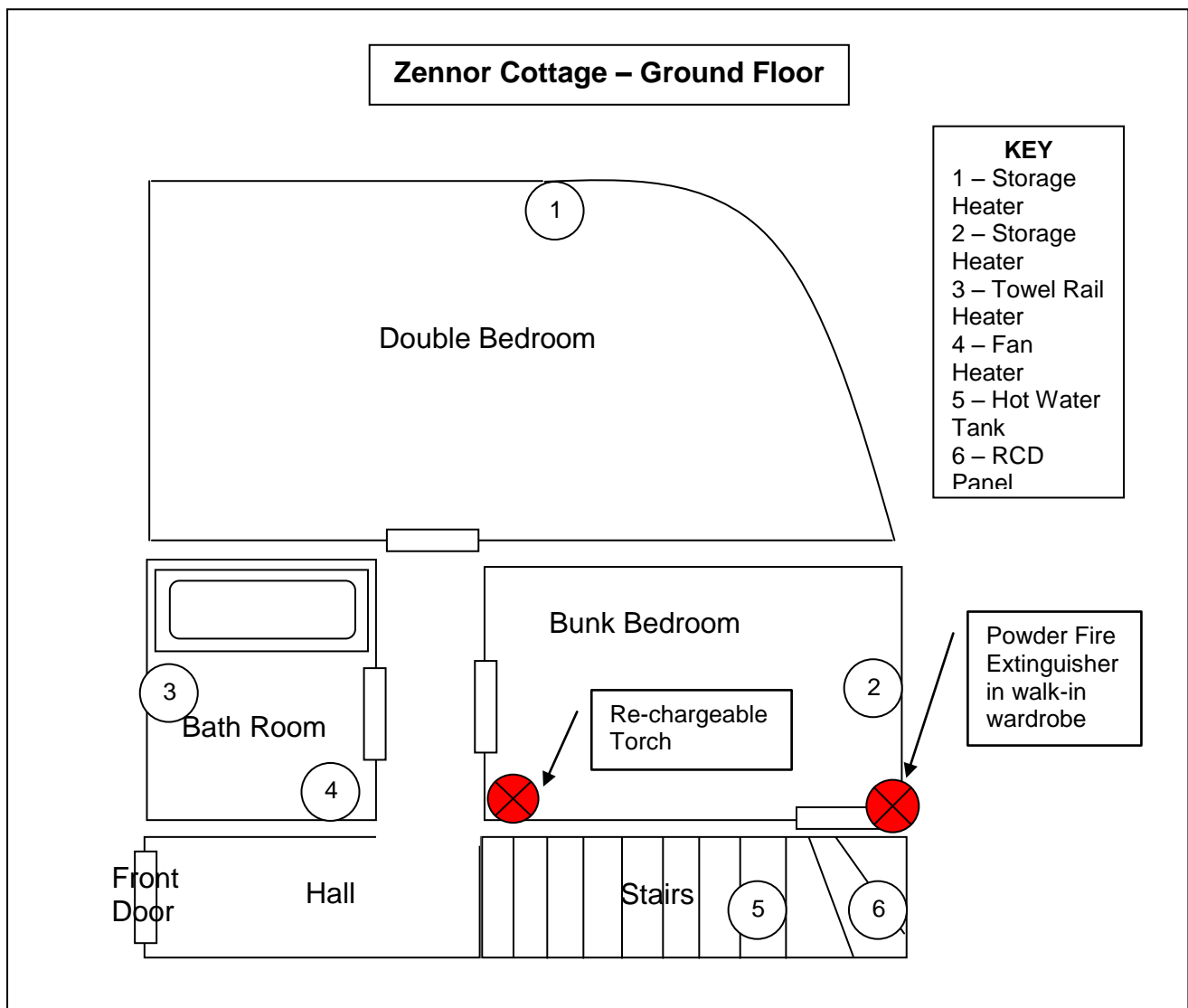
Guests (adults and children) during the day in the living areas and at night in the bedrooms. Cleaners during the change-over period in all rooms. All occupants at risk due to their presence if a fire starts.

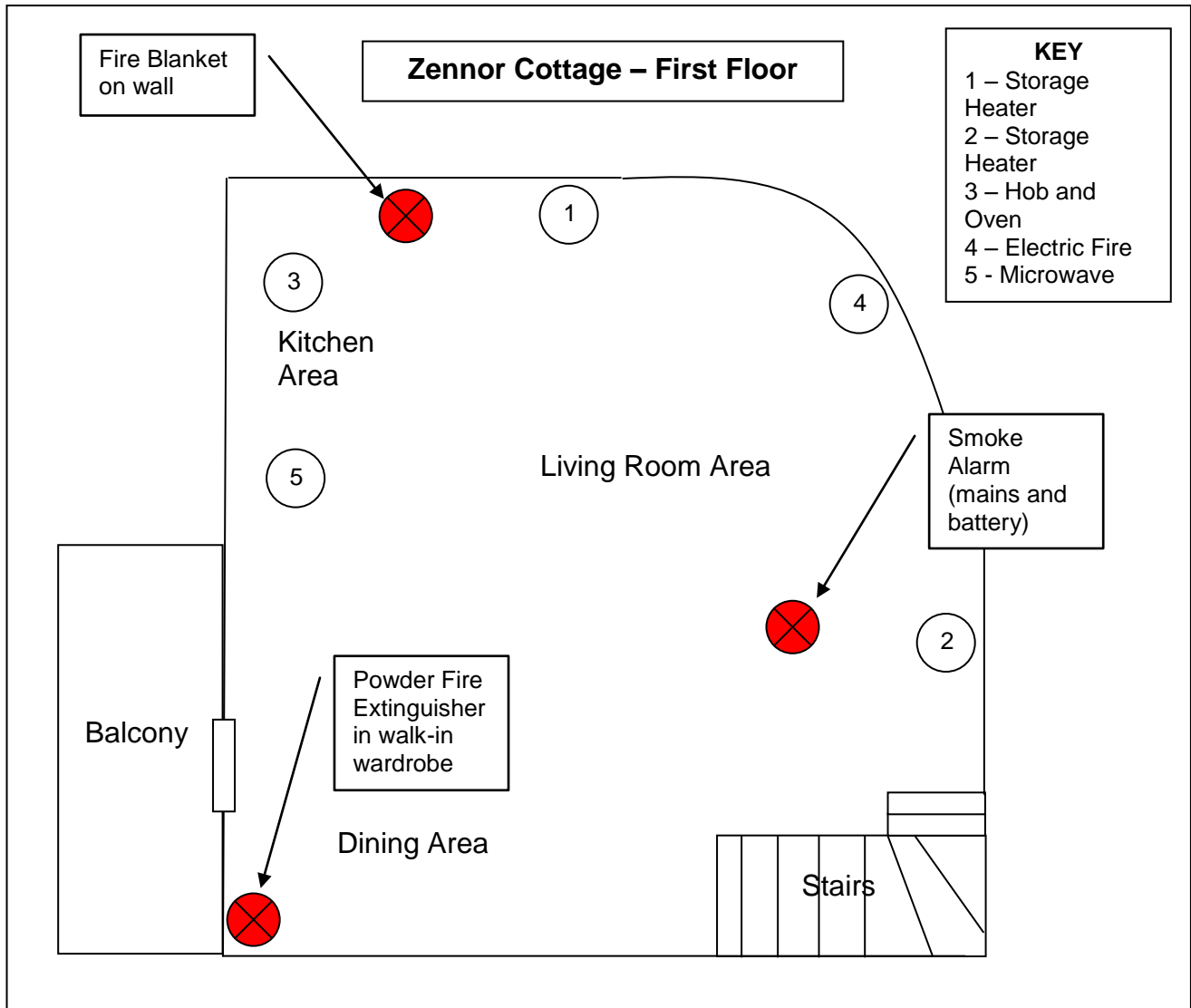
The risk of fire occurring:

Occurrence	Risk Reduction
Worn wires (portable appliance or fixed installation)	Annual portable appliance testing. Look for worn wires during cleaning periods.
Hob left on	Integral warning lights. Pan stands either side of hob.
Microwave set too high/too long	Instruction booklet available.
Storage heater overheating	Controlled by thermostat. Regular vacuum cleaning to remove lint/fluff.
Arson	Weekly bin emptying. External metal letter box.
Sofa, bed, or furnishing fire	No smoking property. Candles, matches etc not provided.

Fire Warning and Fighting

Location of fire warning and fighting equipment:





Escape Routes

The escape routes are from the living areas (kitchen, dining and living room areas) down the stairs and out through the front door. From the bedrooms and bath room the escape route is along the hall to the front door. The accommodation is for four persons. The stairs, hall and door are considered wide enough to allow a quick and easy exit. The hall is provided with coat hooks so that the hall floor may remain clear of blockage or trip hazards. To assist with escape a re-chargeable torch is provided in the bunk bedroom.

The simple layout of Zennor Cottage and the fact that the main entrance/exit will be in regular use by guests and cleaning staff indicates that additional signage is not necessary.

Fire Safety Maintenance Checklist

Equipment	Maintenance	Date
Powder Fire Extinguishers	Monthly check: Pressure Gauge Operating Pins inserted	
Fire Blanket	Monthly check: Cover in-place Red Pull-Tab showing Annual Check: Remove and re-fold	
Torch	Monthly check: Battery charged Check bulb working	
Smoke Alarm	Monthly Check: Vacuum clean lint/fluff Annual Check: Replace battery Press Test False Alarm Record	

Fire Emergency Plan

What to do on discovering a fire or hearing the smoke alarm:

1. Warn other guests – shout Fire, Fire Fire.
2. Fight the fire with Fire Blanket or Extinguishers only if you consider it safe to do so, if electrical equipment is on fire – turn off at the socket/switch.

If fire not extinguished or you consider it not safe to fight the fire:

3. Leave the property closing doors behind you.
4. Call the fire and rescue service by dialling 999

Address: Zennor Cottage, Beacon Road, Marazion. TR17 0HF